



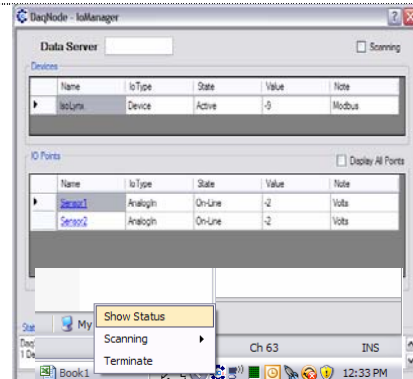
DaqNode for OEMs

DaqNode for OEM's allows for the demonstration of the serial and network communications capabilities of their smart devices by the OEM. DaqNode is an IO server which combines device drivers, configuration GUI's, and polling functions into one program to provide a unified management of the devices under its control. DaqNode provides the OEM a tool with both demonstration capabilities and support for end user evaluation.

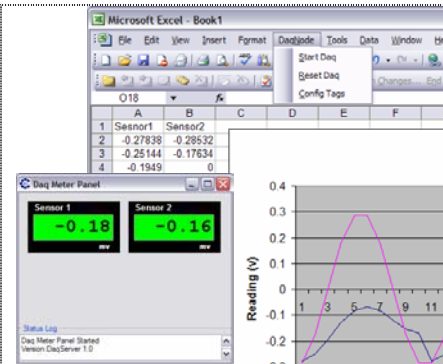
DaqNode supports standard serial protocols like Modbus. It can be customized for your device interface too. Since DaqNode supports multiple device types, all of your products can be demonstrated. DaqNode supports multiple devices, comports, and IO points for the devices connected to the host machine. The program optionally supports web based registration, download, and configuration retention.



DaqNode, residing on the system tray, can be activated for scan starting and stopping. Also, the current IO point values and status of devices can be shown at any time. Using the status GUI, devices attached can be put online and offline, added, removed, or configured for its particular use. Also from the status GUI, IO points for each device can be added, removed, and configured for scaling, input/output, and other parameters as needed.



The DaqNode Excel add-in, with our DaqNode product, can become a sales tool for capturing in tabular form or for plotting results in real time. The DaqNode COM or .net interface provides an easy set of function calls for the end user to write custom code to evaluate your device. Optionally, data query from another machine on the network is supported and the data can be sent to a web site for viewing by a large audience.



Contact Retro-Mation to discuss what DaqNode for OEM solution can do for highlighting your product communication capabilities. Branding and source code options are available. For more information about using this tool at your facility or with your OEM equipment, please call us today.